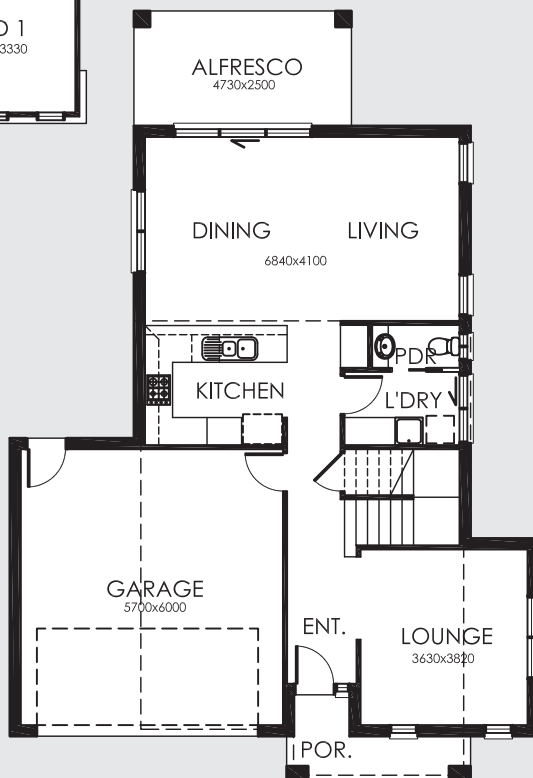
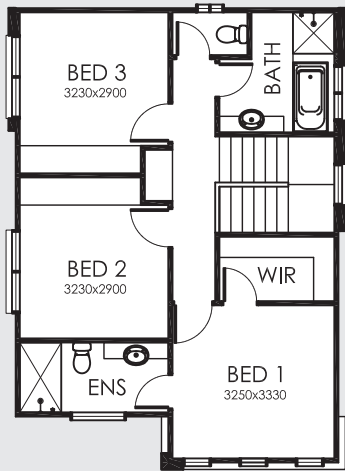


# TWO204

2  3  2.5 



## FEATURES

- 3 Bedrooms
- Large Kitchen/Living/Dining Area
- Double Lock-Up Garage
- Separate Lounge
- Outdoor Alfresco
- Ensuite & WIR

## AREA SPECIFICATIONS

|                |                             |
|----------------|-----------------------------|
| GF Living Area | 81.98 m <sup>2</sup>        |
| FF Living Area | 67.16 m <sup>2</sup>        |
| Porch          | 5.09 m <sup>2</sup>         |
| Garage         | 37.93 m <sup>2</sup>        |
| Alfresco       | 11.82 m <sup>2</sup>        |
| <b>TOTAL</b>   | <b>203.98 m<sup>2</sup></b> |

Width 11.50m and Depth 16.77m

**TASSIE  
HOMES**

**Innovative & Affordable**

e. [sales@tassiehomes.com.au](mailto:sales@tassiehomes.com.au)

w. [www.tassiehomes.com.au](http://www.tassiehomes.com.au)

p. 13 000 TASSIE