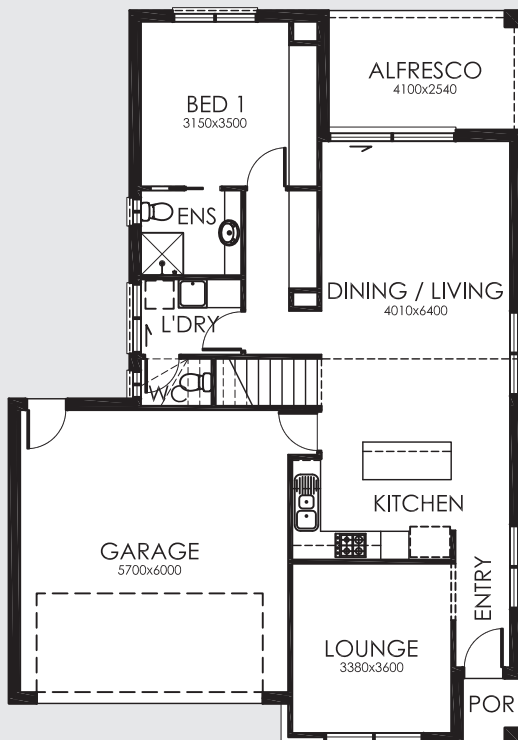
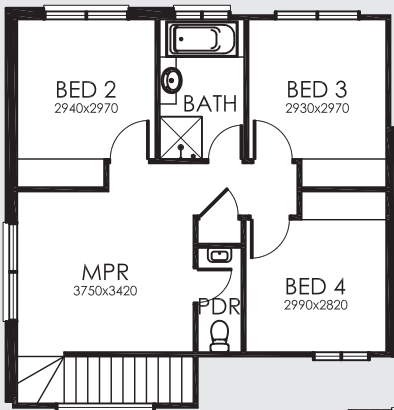


# TWO209

2  4  2.5 



## FEATURES

- 4 Bedrooms
- Large Kitchen/Living/Dining Area
- Double Lock-Up Garage
- Separate Lounge & MPR
- Outdoor Alfresco
- Ensuite

## AREA SPECIFICATIONS

GF Living Area	93.48 m <sup>2</sup>
FF Living Area	65.18 m <sup>2</sup>
Porch	1.75 m <sup>2</sup>
Garage	38.24 m <sup>2</sup>
Alfresco	10.41 m <sup>2</sup>
<b>TOTAL</b>	<b>209.06 m<sup>2</sup></b>

Width 10.90m and Depth 15.61m

**TASSIE  
HOMES**

**Innovative & Affordable**

e. [sales@tassiehomes.com.au](mailto:sales@tassiehomes.com.au)

w. [www.tassiehomes.com.au](http://www.tassiehomes.com.au)

p. 13 000 TASSIE